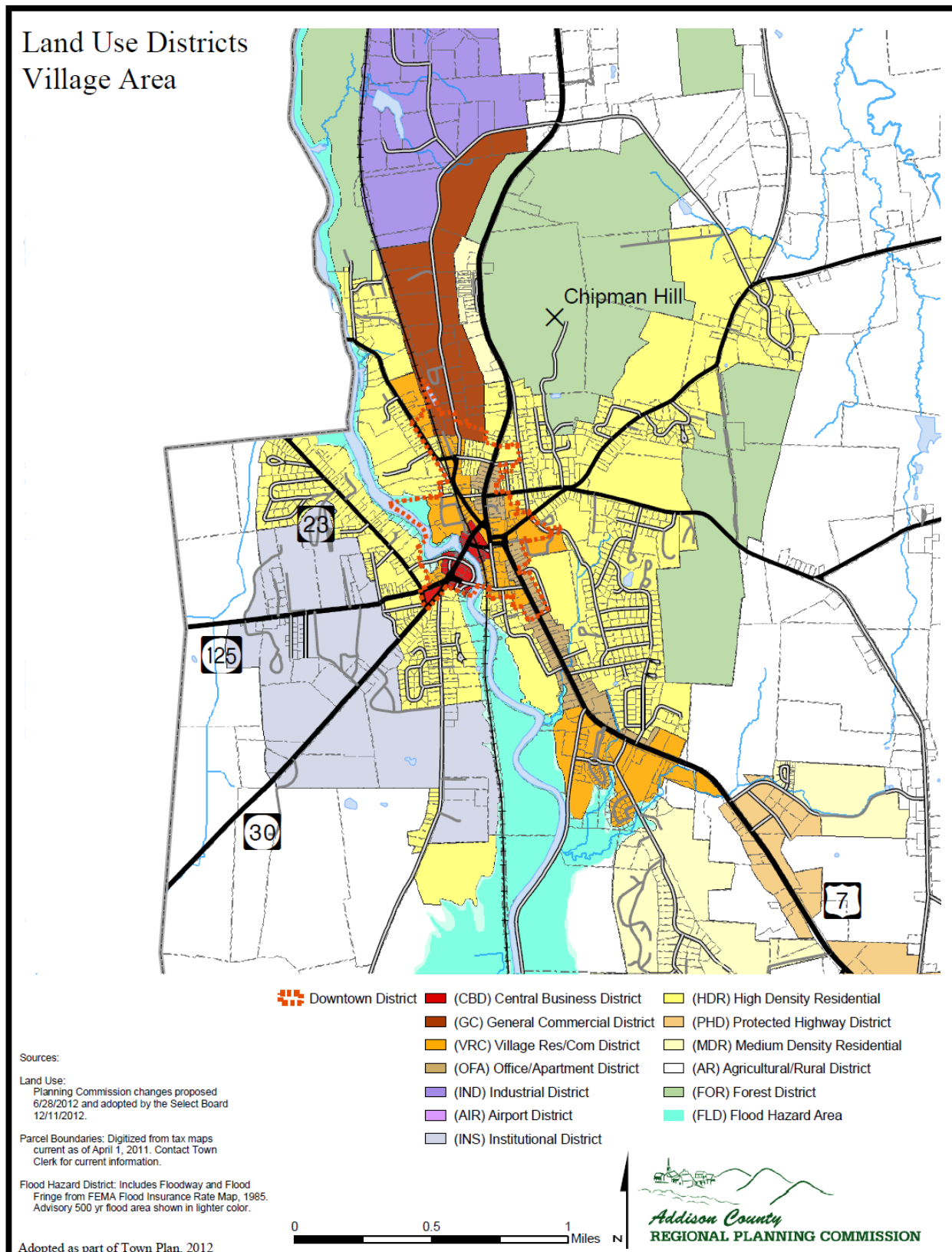
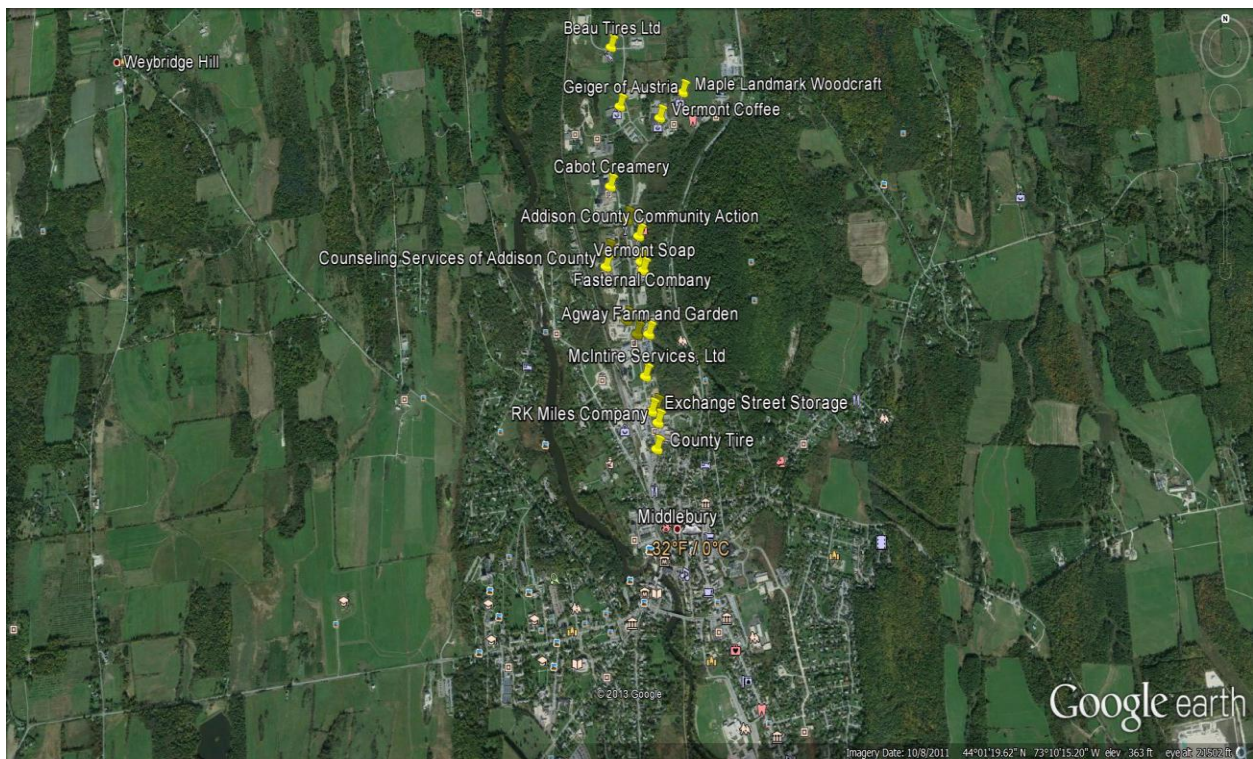


Addendum to Vermont Chamber Testimony of 2/18/14 on H.823

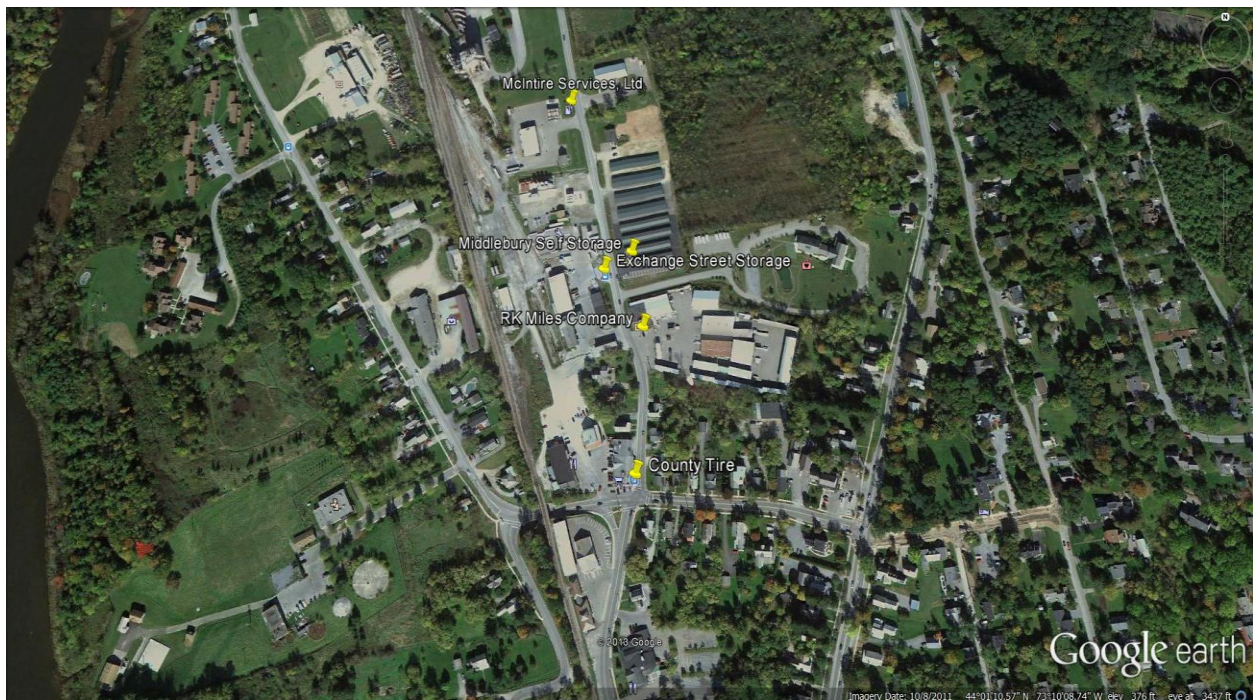
Town of Middlebury - Land Use Districts



Middlebury's General Commercial District and Industrial District



South end of the General Commercial District



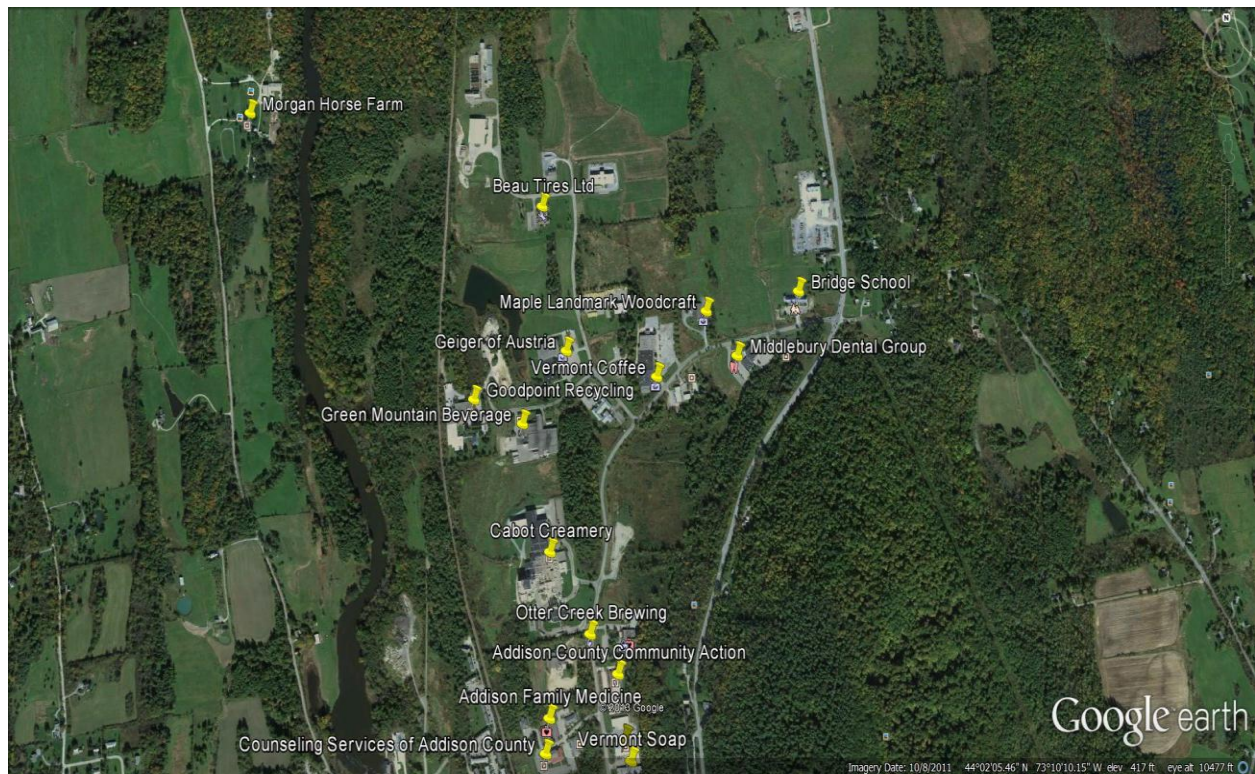
Middle of General Commercial District



Close up No. 3



Close up No. 4 (Industrial Park District)



GC - General Commercial District:

The General Commercial District provides for uses of a general commercial or light industrial type which are not possible, or desirable in CBD, VRC, OFA or PHD districts due to lack of space, the need for truck loading/unloading facilities or aesthetic concerns in those areas. GC uses include equipment and vehicle sales and services, lumber or farm supply establishments, and machine shops. New residential development should not be permitted in GC. Where development in the General Commercial District abuts existing residential areas, extensive landscaping and screening shall be required.

IND - Industrial District:

The Industrial District has been created to encourage the best and fullest use of the Town's prime industrial land to create manufacturing jobs and other economic benefits for the community and surrounding area. The IND is designed to attract clean industry of a diverse nature. This district is reserved for manufacturing with accessory warehousing and offices, research and other uses.

Cabot Creamery in Middlebury's Industrial Park

